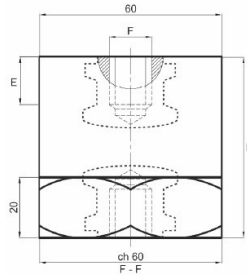




# Data Sheet CPE 60



<b>UL Certification</b>	File Nr. E502533 for category QEUY2/8 for use below 1000V
	File Nr. E502534 for category DLAR2/8 for use above 1000V
<b>Material</b>	Polyester material reinforced with fiberglass BMC RF 3/20
<b>Operating Temperature</b>	°C: - 40° + 130°
<b>Fire reaction</b>	UL94-V0 File Nr. E205214
	HL2 according to the EN45545-2
<b>Thread Material</b>	Galvanized Steel
<b>H</b>	60 mm
<b>E</b>	M10 : 16 mm / M12 : 17 mm / M16 : 22 mm
<b>Tightening Torque</b>	M10 : 24 Nm / M12 : 36 Nm / M16 : 50 Nm
<b>Operating Voltage</b>	3000 V
<b>A.C. surface flashover voltage</b>	20 KV
<b>A.C. internal flashover voltage</b>	50 KV
<b>Tensile stress</b>	1.500 DN
<b>Cantilever stress</b>	600 DN
<b>Compressive stress</b>	10.000 DN
<b>Twisting stress</b>	8 DN x mm
<b>Package</b>	10 pcs
<b>Weight of package</b>	3,50 kgs

## ERIM SRL

Via Bovisasca 24/26 - 20026 - Novate Milanese (MI) - Italy

Tel. (+39) 02/39100533 – Fax. (+39) 02/49698772 – info@erim.it – www.erim.it

P.I./C.F. IT 01803920154 – R.E.A. MI N. 875797 – Reg. Imp. N. 158589 Trib. MI

Cod. SDI SUBM70N