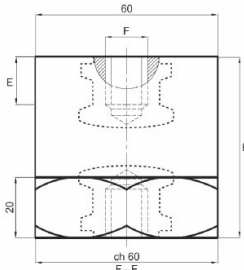




Data Sheet CPE 40



UL Certification	File Nr. E502533 for category QEUY2/8 for use below 1000V File Nr. E502534 for category DLAR2/8 for use above 1000V
Material	Polyester material reinforced with fiberglass BMC RF 3/20
Operating Temperature	°C: - 40° + 130°
Fire reaction	UL94-V0 File Nr. E205214 HL2 according to the EN45545-2
Thread Material	Galvanized Steel
H	40 mm
E	M10 : 14 mm / M12 : 13 mm / M16 : 12 mm
Tightening Torque	M10 : 24 Nm / M12 : 36 Nm / M16 : 50 Nm
Operating Voltage	1500 V
A.C. surface flashover voltage	10 KV
A.C. internal flashover voltage	25 KV
Tensile stress	1.100 DN
Cantilever stress	700 DN
Compressive stress	10.000 DN
Twisting stress	6 DN x mm
Package	12 pcs
Weight of package	2,90 kgs

ERIM SRL

Via Bovisasca 24/26 - 20026 - Novate Milanese (MI) - Italy

Tel. (+39) 02/39100533 – Fax. (+39) 02/49698772 – info@erim.it – www.erim.it

P.I./C.F. IT 01803920154 – R.E.A. MI N. 875797 – Reg. Imp. N. 158589 Trib. MI

Cod. SDI SUBM70N